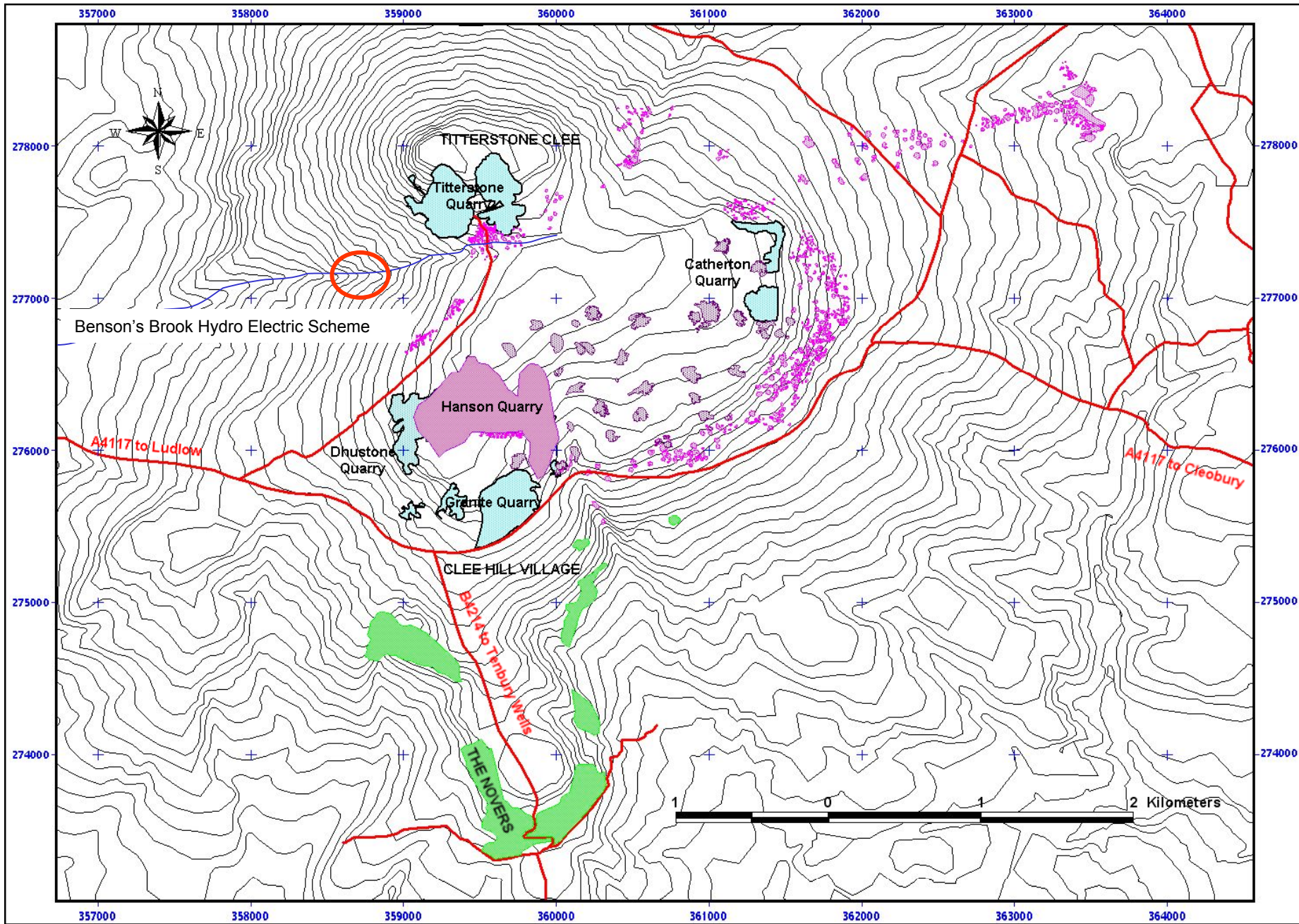




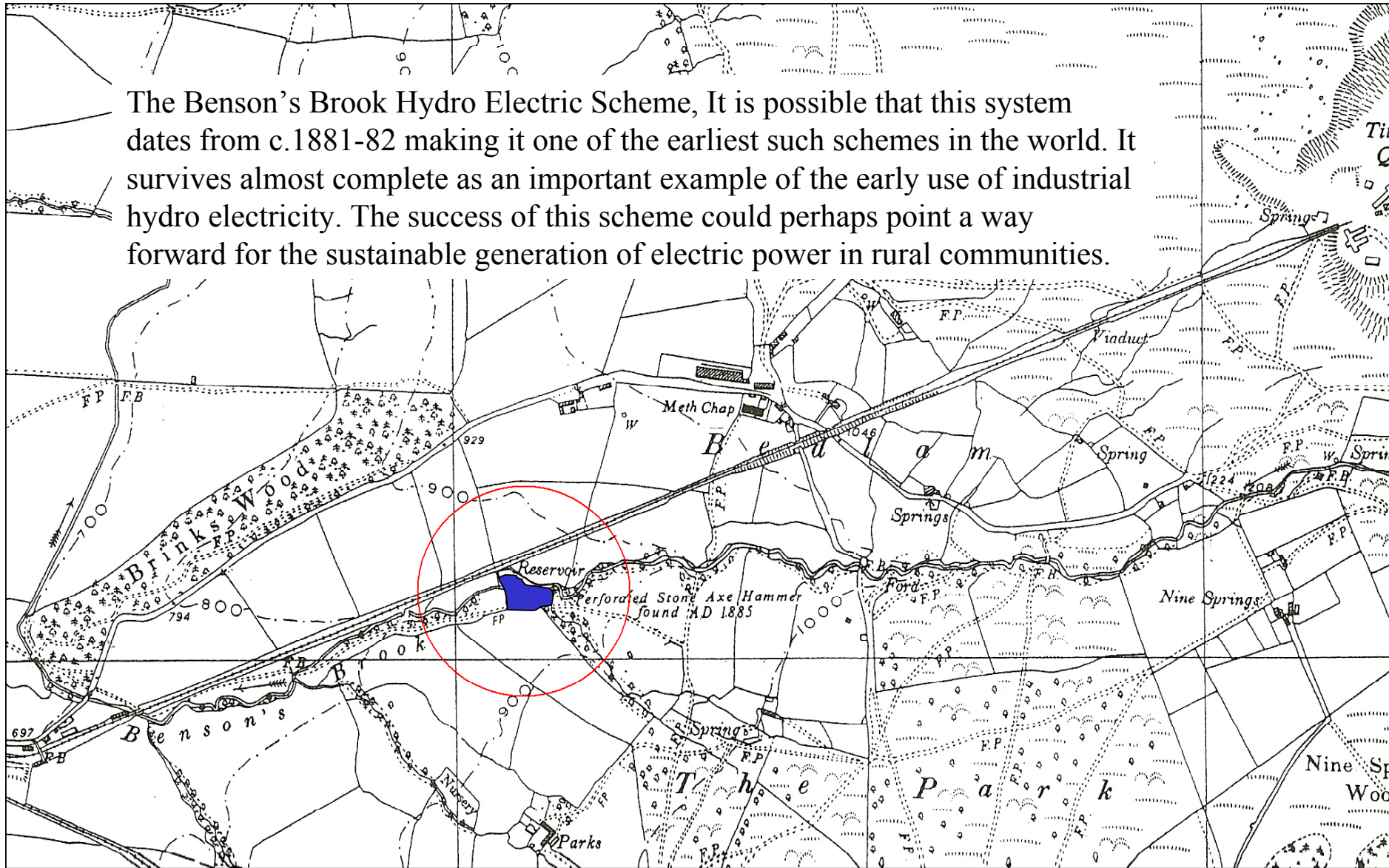
# The Benson Brook Hydro Electric Scheme

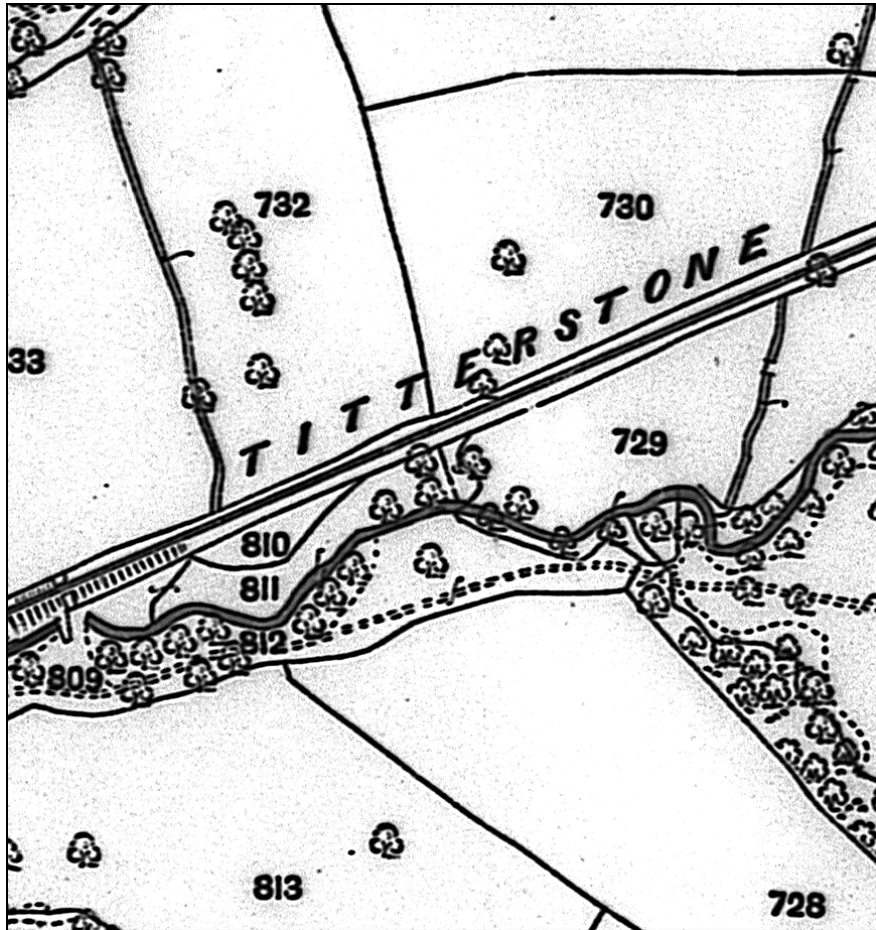


Location of Bensons Brook Hydrdo Electric scheme

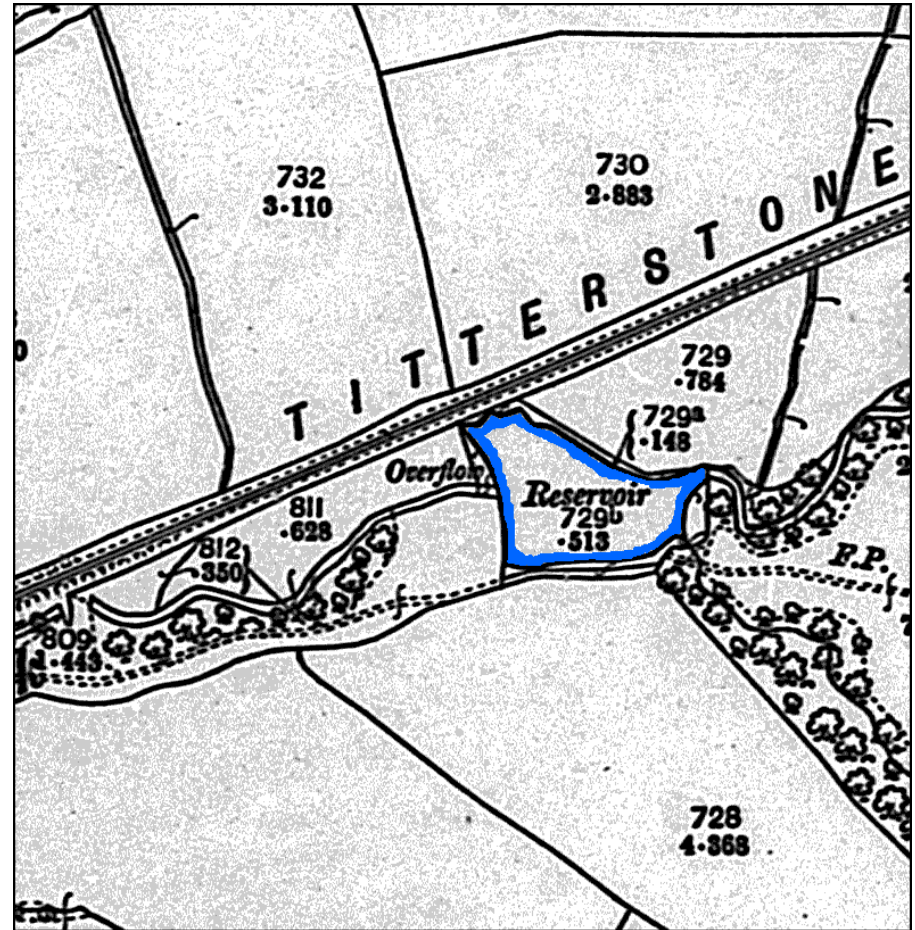


The Benson's Brook Hydro Electric Scheme, It is possible that this system dates from c.1881-82 making it one of the earliest such schemes in the world. It survives almost complete as an important example of the early use of industrial hydro electricity. The success of this scheme could perhaps point a way forward for the sustainable generation of electric power in rural communities.





OS 1st edition showing no reservoir published 1884 (survey would have been earlier)



OS 1909 showing reservoir





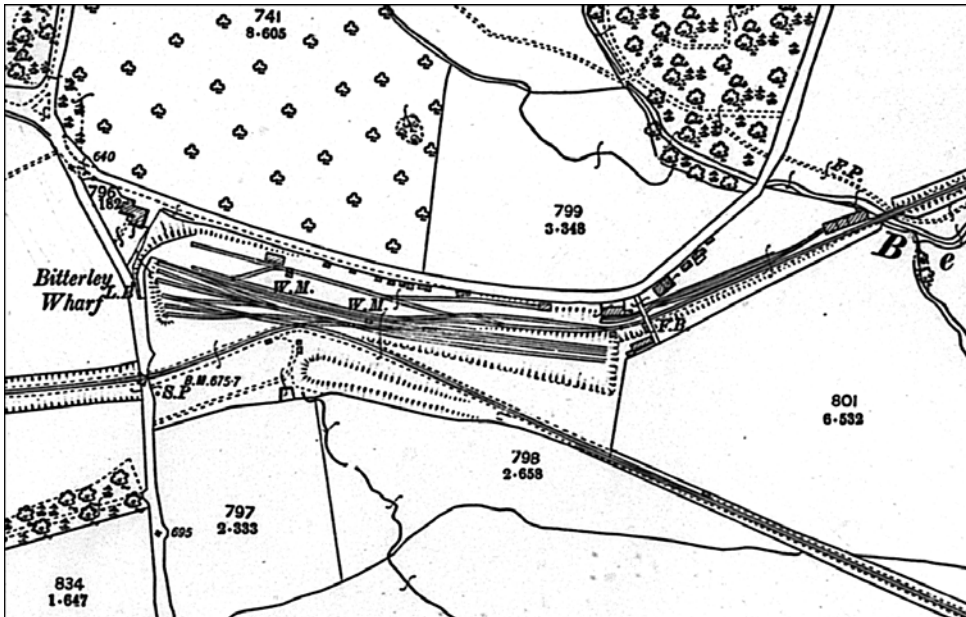
The Dam and associated features survive largely intact





Sluices and main outflow valve





Penstock carrying water from the reservoir to the Bitterley turbines